

2011 PRICE LIST

Since 1937 - The Original New Orleans SnoBall Machine



SnoWizard[®] SnoBall Machine[™] with Polyethylene Drip Pan \$1802.56

Includes: Operating Manual, Precision Blade Setting Gauge, 4 oz Tube Foodservice Grease, Drip Pan Hardware & Tool Pack, Lifetime Machine Warranty and 5-year motor Warranty. ETL approved for NSF and UL standards to meet sanitary and safety regulations in all 50 states.

Extra Polyethylene Drip Pan with molded drain	50.00
Optional Insulated Fiberglass pan with molded drain	205.70
Extra Blades (<i>Stainless Steel/3 per set</i>)	35.00
Optional 12 volt D.C. motor swap out	175.00
12 Volt D.C. Motor	349.01

A \$50.00 crating charge is applied to each machine shipped by motor freight (all machines are shipped freight collect.) Crating charge does not apply to machines picked up at our dock.



SnoWizard[®] Stainless Steel Shaver Station \$3,989.25

Our stainless steel workstation provides the ultimate base for the set-up of our SnoWizard[®] shaved ice machine. The cabinet measures 60" wide x 30" deep x 38" high and has a built-in stainless steel insulated drip pan for placement of the SnoWizard[®] machine. Included are three recessed cup dispensers that adjust to all cup sizes, a water sprayer, and two shelves that provide storage for cups, spoons and other supplies. The entire unit is mounted on casters. NSF Approved. *SnoWizard[®] ice shaver not included.*

Complete Start-up Packages



Budget Starter Package	\$2,778.12
Recommended Starter Package	3,428.26
Super Starter Package	9,920.32

Prices on "Packages" change according to the cost of the individual items.



Trailers

SW-710 Deluxe All-fiberglass Trailer - 7' x 10'	20,051.38
SW-714 Pro-Deluxe All-fiberglass Trailer - 7' x 14'	26,002.35

All-fiberglass trailers with permanent gel coat on all interior and exterior surfaces for sanitary operation and easy cleaning and maintenance. **10-year manufacturer's warranty.** Shown with optional graphics. Call for details.

Destinations charges, tax, title and license not included. Options priced separately.

To Order Call 1-800-366-9766



Snow Cone Machines

SnoWizard offers a complete line of traditional snow cone machines manufactured by Paragon. These machines have powerful motors, sturdy cabinets and attention getting graphics. We have four models to suit your needs.



The Artic Blast

\$521.25

A hard-working, economical option, the Artic Blast has tinted, high-impact polycarbonate side panels. Constructed of stainless steel and aluminum with a powder coat finish.



The Blizzard

\$662.25

Contemporary styling, sturdy stainless steel and aluminum construction. This unit also has a lighted serving compartment that highlights the snow for increased sales.



1911 Antique SnoStorm

\$722.25

This machine combines convenient features with vintage charm to increase sales. The cabinet has an antique black top, bright blue metal filigree and old-fashioned graphics.



The Cooler

\$549.00

The Cooler has wheels and is made from rugged roto-cast polyethylene so it's lightweight and less expensive.

Cube & Rotational Shavers



Hatsuyki HC-8E ***Hatsuyki HC-8E-DC***

\$1,434.00

1,632.15

The HC-8E Cube Ice Shaver is the perfect choice for businesses that must use cubed ice. It produces shavings much finer than snow cone machines and closer to those of a horizontal block shaver. Available in AC and DC models.



Hatsuyki HC-S32A

\$1,268.50

This cube shaver is the successor to the model HC-6S. The S32A has a smaller hopper capacity and output than the HC-8E and is recommended for low volume operations and home use.



Hatsuyki HC-27

\$1,470.00

The HC-27 Cube shaver is the latest in larger capacity designs. It has a safety feature that stops the unit automatically when the lid is opened. Non NSF rated.



Hatsuyki HF-500E

\$1,725.75

These rotational shavers use small blocks of ice that rotate over a stationary blade and produce a curled shaving of snow popular with "shave ice" enthusiasts.

Icemakers



		<i>Plastic Cans</i>	<i>St. Steel Cans</i>
BM-900	9 block BLOCKMaster™ Ice-maker	\$4,083.44	\$4,302.34
BM-2000	20 block BLOCKMaster™ Ice-maker	5,593.36	6,255.84
BM-4000	40 block BLOCKMaster™ Ice-maker	7,758.53	8,465.94
BM-4200	40 block BLOCKMaster™ High-capacity	8,218.71	8,696.07
BM-4500	40 block BLOCKMaster™ Super high-capacity	10,163.07	10,616.51

All icemakers include propylene glycol and 5-year compressor warranty.

Ice Bags (Box of 500)	\$39.56
Propylene Glycol -2 ½ gallon pail	41.50
Propylene Glycol – 5 gallon pail	79.68
Replacement Stainless Steel ice cans (for use with BLOCKMaster™ machines only)	82.55



Soft-Serve Ice Cream

DF-200 Soft Serve Machine - 6 quart/115 Volts	3,406.81
Model 401 Soft Serve Machine - 20 quart/208-230 Volts	5,948.66
Model 404 Soft Serve Machine - 20 quart/208-230 Volts	7,571.60
Model 407 Soft Serve Machine - 10 quart/115 Volts or 220 Volts	5,020.98
Model 408 Soft Serve Machine - 20 quart/115 Volts	6,280.20
Model 501 Soft Serve Twin Twist - 11 quart/208-230 Volts	11,767.30

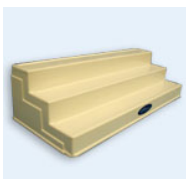
We carry the complete line of SaniServ soft serve ice cream, yogurt and daiquiri machines.



Plastic Ice Molds

	\$14.28
	20 or more - \$12.75

Polyethylene molds for freezing blocks of ice that fit perfectly into the SnoWizard® SnoBall Machine™. Recommended for low-volume operations using less than 12 blocks per day. Blocks should freeze solid in 36 to 48 hours depending on temperature and the number of molds put into the freezer at one time. For best results, molds should be placed in an upright freezer on shelves which allow the cold air to circulate around the mold for faster freezing time.



Acrylic Bottle Stands

24" Bottle Stand – Holds 21 to 28 bottles	\$82.23
36" Bottle Stand – Holds 33 to 44 bottles	111.20

Heavy-duty acrylic bottle stands for displaying syrup serving bottles. Glass or plastic bottles can be placed on the 3 tiers as well as an additional row in front of the first tier. Each tier of the 24" stand holds 7 bottles, and 11 bottles on the 36" stands.



Simple Syrup Mixing Containers

10-Gallon Heavy Duty Rubbermaid® Container	\$47.58
20-Gallon Heavy Duty Rubbermaid® Container	57.09
32-Gallon Heavy Duty Rubbermaid® Container	65.83

Heavy-duty Rubbermaid® brand polyethylene containers in foodservice white polyethylene are used to mix batches of simple syrup. Each unit has graduated markings for measuring water and sugar. Come complete with lid and a double-action Tomlinson brand spigot.

All prices are subject to change.

To Order Call 1-800-366-9766